



# Ronadeck Resin Bound Surfacing & Tree Pit System

Versatile Permeable Resin Bound Aggregate Flooring System



## Description

These highly decorative products offer a range of finishes that are durable and decorative while at the same time complementing the environment into which they are introduced.

Both Ronadeck Resin Bound Surfacing (RBS) and Ronadeck Tree Pit System (TPS) allow free draining of rainwater either direct to ground or through controlled drainage and thus can be in line with UK SuDS\* regulations.

They provide a non slip finish that is as pleasant to walk on as it is beautiful to look at.

Either select from the standard aggregate blends or for the ultimate in unique finishes why not provide a colour sample and let us offer a selection of tailor made blends for from which to choose? Even if your fancy is white with pink spots we can oblige!

## Benefits

Based on tough UV stable high performance non-yellowing resins and selected blends of tightly graded aggregates, once cured both RBS and TPS are colour-fast, trafficable, slip resistant~, water permeable and non toxic to plants, aquatic life and wildlife.



\* Sustainable Drainage System

~ Low Risk according to BS8204 Pt 6.



# Ronadeck Resin Bound Surfacing & Tree Pit System

Versatile Permeable Resin Bound Aggregate Flooring System

## Uses

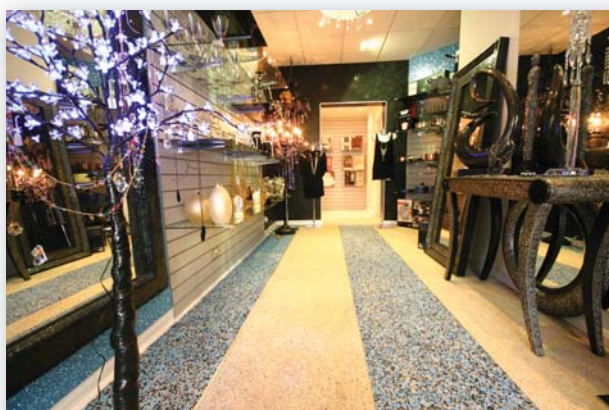
Provides a unique, potentially seamless and decorative finish while helping to control flooding, ponding and drainage.

Suitable for new and refurbished footpaths, driveways, pond and pool surrounds, non-slip areas, shop floors, parks, sitting out areas, commercial and public areas. Selected blends may be suitable for foot traffic in and around tree pits to regular vehicular traffic such as residential driveways and commercial car parks.

## Installation

For maximum permeability performance RBS&TPS should be applied onto 150mm of properly compacted aggregate sub-base. For refurbishment of existing floors and drives RBS may be applied onto any existing flooring system that is sound, rigid and properly prepared. For some floors a special primer may be necessary.

Application thickness should be at least 15mm but may be greater depending on the condition of the substrate and the expected traffic.



## Key Performance†

- Compressive Strength - 8 to 18MPa
- Flexural Strength – 3.5 to 7.0MPa
- Tensile Strength – 1.4 to 2.5MPa
- Permeability – Up to 45L/min
- Slip Resistance – Low Risk

† typical results, figures will vary depending on the product and/or type of aggregate used.



## Limitations

Due to its open texture and permeability Ronadeck Resin Bound systems are not normally recommended for heavy, industrial or hard wheeled traffic.

## Guarantee

Ronacrete offer a 10 year limited liability guarantee. Contact your local Ronacrete office for more details.

### SIKA HONGKONG LTD

Rm. 1507-12, 15/F, Block A,  
New Trade Plaza,  
6 On Ping Street,  
Shatin, N.T., Hong Kong.

### Contact

Tel : +852 2686 8108  
Fax : +852 2645 3671  
E-mail : marketing@hk.sika.com  
www.sika.com.hk



BUILDING TRUST

