



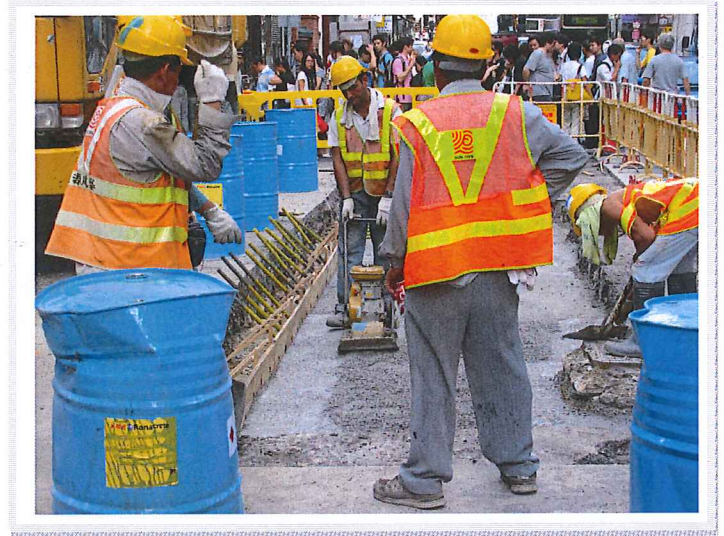
Monoset RXP

Rapid Hardening and Ultra High Strength Polyester Concrete







Description

Monoset RXP is a prepacked polyester modified concrete designed for repairing concrete slabs or laying new concrete floors where rapid hardening, hard wearing and high ultimate strength is of paramount importance. Monoset RXP is manufactured from high technology polyester resin, powder hardener and special graded fillers.

For thick section repair or filling-up large voids, Monoset RXP can be further extended by adding sands, granite fines and aggregates at site. Monoset RXP will achieve a monolithic bond to most substrates and will accept general traffic in one hour or heavy traffic in two hours of placement.






Benefits

-  Excellent hard wearing performance
-  Rapid strength gain
-  Reduces down time and disruption
-  Anti oil-staining and self-cleaning surfaces
-  High early and ultimate compressive strength
-  Good chemical resistance

Uses

-  Bridge decks
-  Loading platform
-  Roadways
-  Driveways
-  Carparks

Key Performance Indicators

-  Fit for general traffic after 1 hour
-  Accept heavy traffic in 2 hours
-  Very high ultimate compressive strength, 70 MPa in 7 days



Specification Clause

The Rapid Hardening and Ultra High Strength Polyester Concrete shall be Monoset RXP by Ronacrete (Far East) Ltd, tel. (852) 2865 5872. All materials to be applied in accordance with manufacturer's instructions.

Technical Data

Compressive Strength	> 60 MPa	at 2 hours
	> 70 MPa	at 7 days
Working Time	Approx. 30 minutes depends on temperature	

Packaging

Monoset RXP is supplied in 220 kg drum resin and 27.5 kg bag powder hardener.

Application (*Please Refer to the Method Statement and MSDS)

Preparation

Provide structurally sound and clean substrate to receive high strength screed. Ensure the surface is free from grease, oil, dirt and other deleterious material.

Mixing

Mix the powder component of Monoset RXP with sand / granite fines and aggregates with forced action mixer or shovel. Slowly add the resin into the mixes and mix with the aid of force action mixer or shovel to achieve a homogenous concrete mixture. Mixing ratio will be varied with the thickness and usage of floor. Typical range of mix design is :

Resin	: 15 kg
Powder Hardener	: 30 kg
Sand / Granite Fines	: 15 – 20 kg
10mm Aggregates	: 60 – 110 kg

Installation

Trowel apply onto prepared substrate. Finish with float or trowel.

Shelf Life and Storage

Shelf life is 3 months. Store in a cool and dry conditions in the original and unopened packaging. Exposure to high humidity and high temperature may reduce the shelf life.

Health and Safety

Protective clothing such as goggles, overalls and gloves is recommended to prevent any effect from prolonged skin contact, inhalation or ingestion. Refer to Health and Safety Data Sheet.

Technical Service and Support

Ronacrete provide free technical advice and support during design and installation of all systems for flooring, concrete repair, bonding, bedding and waterproofing. If you need any further information including method statement or additional technical data sheet, contact the Ronacrete Technical Department on (852) 2866 4365 or visit our web site www.ronacrete.com.hk.

Guarantee

Ronacrete products are guaranteed fit for purpose and of merchantable quality.

Our Ref. : RFE-DS102_B Issue 2 04.02.16

SIKA HONGKONG LTD

Rm. 1507-12, 15/F, Block A,
New Trade Plaza,
6 On Ping Street,
Shatin, N.T., Hong Kong.

Contact

Tel : +852 2686 8108
Fax : +852 2645 3671
E-mail : marketing@hk.sika.com
www.sika.com.hk